

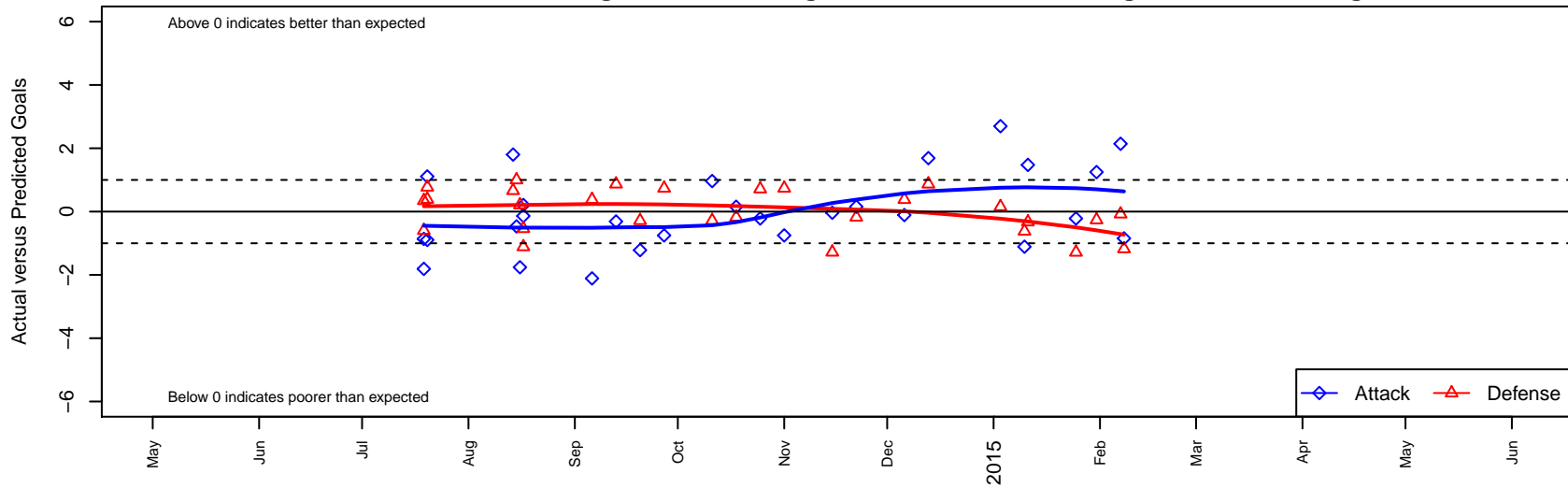
NSC Velocity G01

North Shore SC
 Woodinville, WA
 G01 total strength=935
 attack=1.55 defense=1.65
 fall league = NPSL G13D1

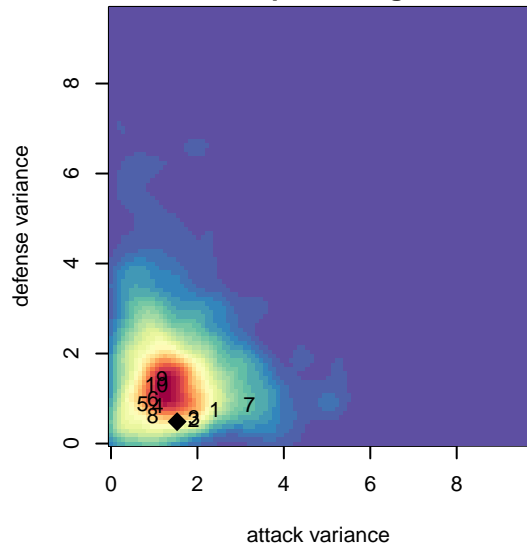
alt names used:
 NSC Velocity G01

Venues played:
 2014 KITG GU13 Green
 2014 Bigfoot Silver U13
 2014 NPSL G13D1
 2014 Founders Cup G01

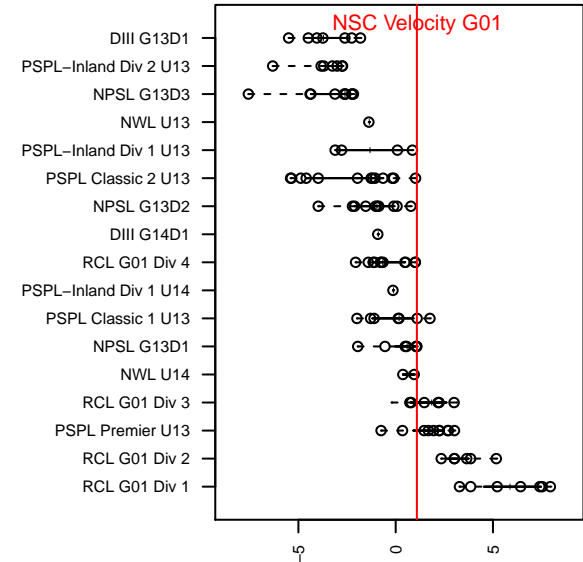
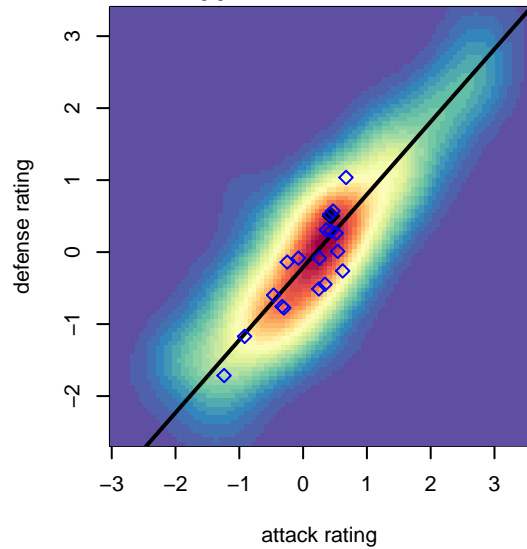
NSC Velocity G01
 Dots are actual minus expected GF (blue circles) and GA (red triangles).
 Blue line is smoothed change in attack strength. Red is smoothed change in defense strength.



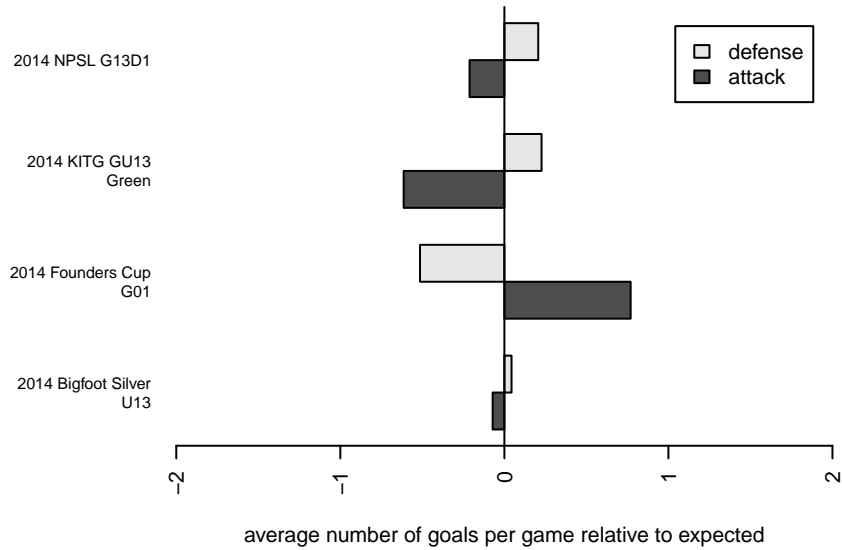
**attack and defense variance (black dot)
relative to other teams
and top 10 in region**



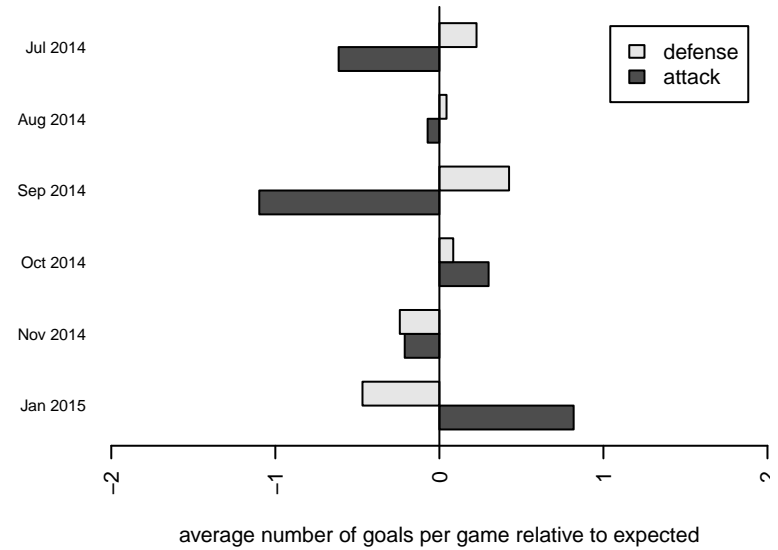
**attack and defense rating
relative to others at age
and all opponents in last 13 months**



Performance relative to 13 month average



Performance relative to 13 month average



date	home		away		venue	pred.home	pred.away
2015-02-08	NSC Velocity G01	0	Crossfire Select Granston G01	2	2014 Founders Cup G01	0.85	0.82
2015-02-07	NSC Velocity G01	4	NSC Reign G01	1	2014 Founders Cup G01	1.86	0.92
2015-01-31	NSC Velocity G01	2	Kent United Green G01	1	2014 Founders Cup G01	0.75	0.74
2015-01-25	Lake Hills Extreme G01	2	NSC Velocity G01	2	2014 Founders Cup G01	0.71	2.22
2015-01-11	BIFC Blue G01	1	NSC Velocity G01	3	2014 Founders Cup G01	0.67	1.53
2015-01-10	NSC Velocity G01	2	Seattle United S Black G01	1	2014 Founders Cup G01	3.11	0.38
2015-01-03	NSC Velocity G01	10	SGESC Fusion G01	0	2014 Founders Cup G01	7.30	0.15
2014-12-13	PSA Force G01	0	NSC Velocity G01	3	2014 NPSL G13D1	0.87	1.31
2014-12-06	NSC Velocity G01	3	Seattle United S Black G01	0	2014 NPSL G13D1	3.11	0.38
2014-11-22	Crossfire Select Granston G01	1	NSC Velocity G01	1	2014 NPSL G13D1	0.82	0.85
2014-11-15	NSC Velocity G01	1	Crossfire Select Wilkinson G01	2	2014 NPSL G13D1	1.04	0.72
2014-11-01	Kent United Green G01	0	NSC Velocity G01	0	2014 NPSL G13D1	0.74	0.75
2014-10-25	NSC Velocity G01	2	Lake Hills Extreme G01	0	2014 NPSL G13D1	2.22	0.71
2014-10-18	NSC Velocity G01	1	Crossfire Select Granston G01	1	2014 NPSL G13D1	0.85	0.82
2014-10-11	Crossfire Select Wilkinson G01	1	NSC Velocity G01	2	2014 NPSL G13D1	0.72	1.04
2014-09-27	NSC Velocity G01	0	Kent United Green G01	0	2014 NPSL G13D1	0.75	0.74
2014-09-20	Lake Hills Extreme G01	1	NSC Velocity G01	1	2014 NPSL G13D1	0.71	2.22
2014-09-13	NSC Velocity G01	1	PSA Force G01	0	2014 NPSL G13D1	1.31	0.87
2014-09-06	Seattle United S Black G01	0	NSC Velocity G01	1	2014 NPSL G13D1	0.38	3.11
2014-08-17	Seattle United W Blue G01	1	NSC Velocity G01	2	2014 Bigfoot Silver U13	0.46	1.79
2014-08-17	NSC Velocity G01	1	Crossfire Premier J James G01	2	2014 Bigfoot Silver U13	1.14	0.89
2014-08-16	NSC Velocity G01	3	XUnk SNOHOMISH FORCE FC G01	0	2014 Bigfoot Silver U13	4.76	0.21
2014-08-15	NSC Velocity G01	0	WA Rush Nero G01	0	2014 Bigfoot Silver U13	0.47	1.00
2014-08-14	NSC Velocity G01	4	FC Edmonds Elite G01	0	2014 Bigfoot Silver U13	2.20	0.66
2014-07-20	NSC Velocity G01	4	UPSC Blue Starz G01	0	2014 KITG GU13 Green	2.89	0.39
2014-07-20	CYSA Timber Barons Green G01	0	NSC Velocity G01	0	2014 KITG GU13 Green	0.77	0.90
2014-07-19	CSC Velocity Green G01	0	NSC Velocity G01	2	2014 KITG GU13 Green	0.35	2.86
2014-07-19	Crossfire Yakima G01	1	NSC Velocity G01	0	2014 KITG GU13 Green	0.40	1.81